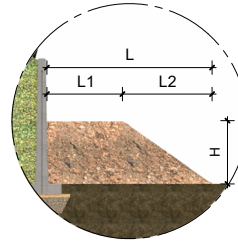
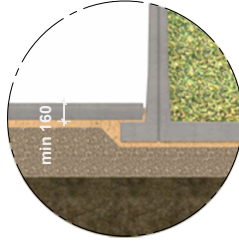
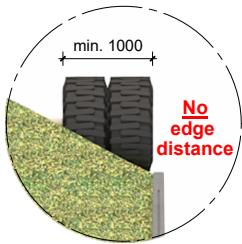
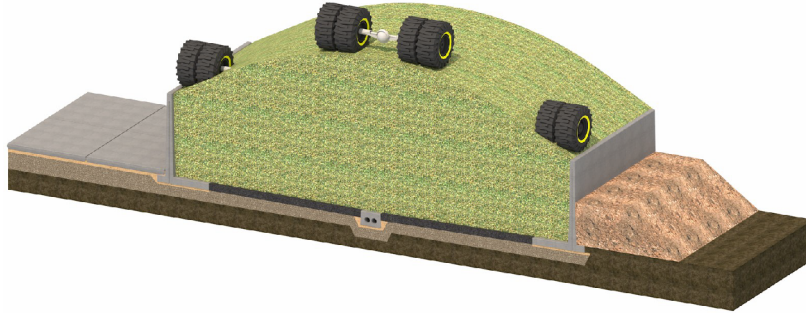
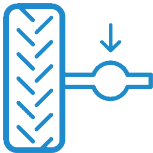


# Applications possibilities

## LA-retaining wall (Agricultural)



### 10T axle load



LA200S  
LA250S  
LA300S

#### Unsurfaced

600mm over heel  
750mm over heel  
750mm over heel

#### Hard-surfaced

160mm over heel  
160mm over heel  
160mm over heel

#### L

3250mm  
3750mm  
4250mm

#### L1

1500mm  
1500mm  
1500mm

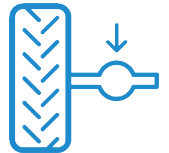
#### L2

1750mm  
2250mm  
2750mm

#### H

1000mm  
1250mm  
1500mm

### 15T axle load



LA150G  
LA175G

400mm over heel  
400mm over heel

160mm to top heel  
160mm to top heel

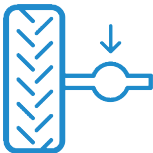
3000mm  
3000mm

1500mm  
1500mm

1500mm  
1500mm

750mm  
875mm

### 15T axle load



LA200G  
LA250G  
LA300G  
LA350G  
LA400G

500mm over heel  
550mm over heel  
600mm over heel  
450mm over hak  
600mm over hak

160mm to top heel  
160mm to top heel  
160mm to top heel  
160mm to top heel  
160mm to top heel

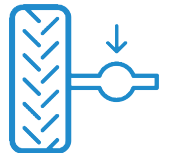
3300mm  
3700mm  
4100mm  
4500mm  
5000mm

1500mm  
1500mm  
1500mm  
1500mm  
1500mm

1800mm  
2200mm  
2600mm  
3000mm  
3500mm

1000mm  
1250mm  
1500mm  
1750mm  
2000mm

### 20T axle load



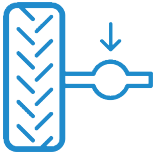
LA300H  
LA350H

230mm to top heel  
230mm to top heel

160mm to top heel  
160mm to top heel

Does not apply

### 20T axle load



LA100V  
LA125V  
LA150V  
LA175V  
LA200V  
LA250V  
LA300V  
LA400V

160mm to top heel  
160mm to top heel  
160mm to top heel  
160mm to top heel  
160mm to top heel  
200mm over heel  
300mm over heel  
300mm over heel

No requirement  
No requirement  
No requirement  
No requirement  
No requirement  
160mm to top heel  
160mm to top heel  
160mm to top heel

No requirement  
No requirement  
No requirement  
No requirement  
No requirement  
No requirement  
No requirement  
No requirement

Alternative application/loads on request

<p>Max. <b>28°</b></p>	<p>Max. silage height panel height + 0.5m</p>	<p>Dry matter content</p> <p>min. <b>33%</b> min. <b>25%</b></p>	<p>Store silage at max. 800kg per m<sup>3</sup></p> <p>D: Füllgutklassen 1 u. 2a nach DIN 11622-2</p>	<p>This silage clamp complies with:</p> <ul style="list-style-type: none"> <li>BS 5502-22 Agricultural building and structures</li> <li>BRL 2812 Agricultural concrete products</li> <li>BS EN 13369 Precast concrete products</li> </ul>
------------------------	---	--	---	---

Applications shown are based on the Dutch Standard, these may differ per country. This could potentially affect your desired solution.