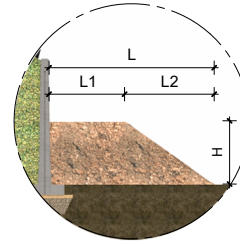
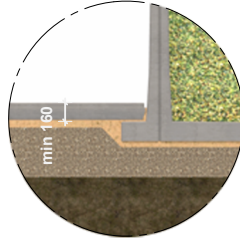
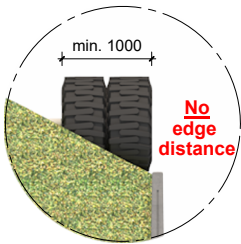
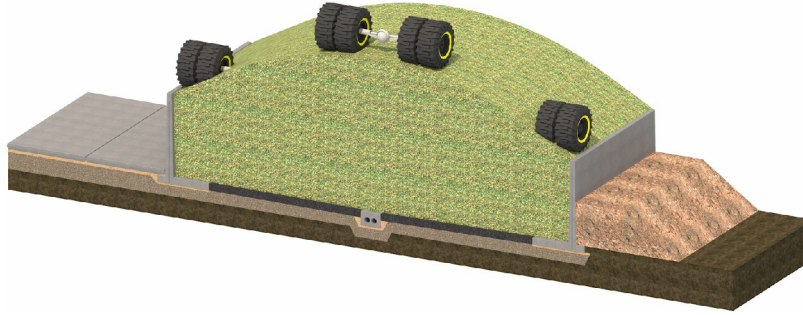


# Applications possibilities

## L-HAK retaining wall (Agricultural)



### Top-up freestanding

### Top-up embankment

#### Unsurfaced

#### Hard-surfaced

#### L

#### L1

#### L2

#### H

L100hak

200mm over heel

160mm to top heel

No requirement

L125hak

300mm over heel

160mm to top heel

No requirement

L150hak

300mm over heel

160mm to top heel

No requirement

L175hak

350mm over heel

160mm to top heel

No requirement

L200hak

350mm over heel

160mm to top heel

No requirement

L225hak

350mm over heel

160mm to top heel

No requirement

L250hak

400mm over heel

160mm to top heel

No requirement

L300hak

450mm over heel

160mm to top heel

No requirement

L350hak

550mm over heel

160mm over heel

No requirement

L400hak

600mm over heel

160mm over heel

No requirement

L100hak

2200mm

1500mm

700mm

500mm

L125hak

2400mm

1500mm

900mm

625mm

L150hak

2600mm

1500mm

1100mm

750mm

L175hak

2750mm

1500mm

1250mm

875mm

L200hak

3070mm

1500mm

1570mm

1000mm

L225hak

3270mm

1500mm

1770mm

1125mm

L250hak

3460mm

1500mm

1960mm

1250mm

L300hak

3850mm

1500mm

2350mm

1500mm

L350hak

4250mm

1500mm

2500mm

1750mm

L400hak

4650mm

1500mm

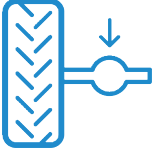
3150mm

2000mm

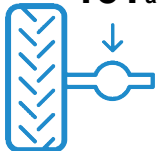
Does not apply

Alternative application/loads on request

10T axle load



15T axle load



Max.  
**28°**



Max. silage height  
panel height + 0.5m



Dry matter content



Store silage at  
max. 800kg per m<sup>3</sup>

D: Füllgutklassen 1 u.  
2a nach DIN 11622-2

This silage clamp  
complies with:

- ▶ BS 5502-22  
Agricultural building and structures
- ▶ BRL 2812  
Agricultural concrete products
- ▶ BS EN 13369  
Precast concrete products

Applications shown are based on the Dutch Standard, these may differ per country. This could potentially affect your desired solution.