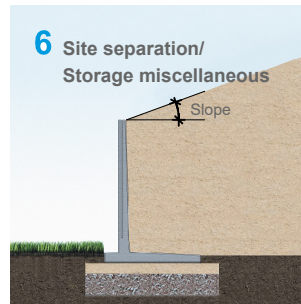
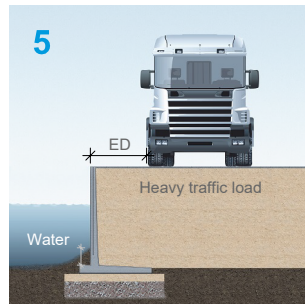
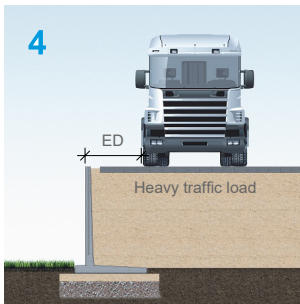
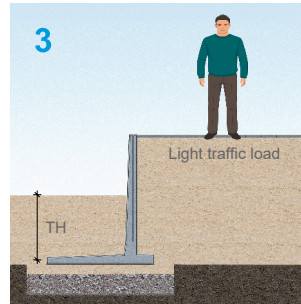
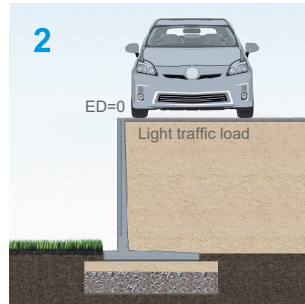
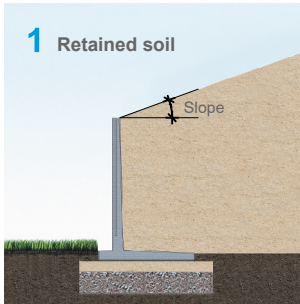


## Application possibilities LHAK - Civil Engineering



Soil parameters at 1, 2, 3:	1800kg/m <sup>3</sup> ; Angle of internal friction 32,5°
Soil parameters at 4, 5:	1800kg/m <sup>3</sup> ; Angle of internal friction 35°
Subsoil parameters:	1900kg/m <sup>3</sup> ; Angle of internal friction 35°
ED:	Edge distance
TH:	Top-up height
No concrete or stabilisation sand required	

Wall type	Load type 1 Retained soil with slope Max. Slope(°)	Load type 2 Light traffic load (5kN/m <sup>2</sup> ) ED	Load type 3 Inverted application Min. Top-up (2kN/m <sup>2</sup> ) TH
L050HAK	31°	0cm	N/A see LR-walls
L075HAK	31°	0cm	
L100HAK	20°	0cm	
L125HAK	20°	0cm	
L150HAK	20°	0cm	
L175HAK	20°	0cm	
L200HAK	20°	0cm	
L225HAK	20°	0cm	
L250HAK	20°	0cm	
L300HAK	20°	0cm	
L350HAK	20°	0cm	
L400HAK	15°	0cm	
L500HAK	15°	0cm	
Wall type	Load type 4-5 Heavy traffic load possibly as a weir VK30 16,7kN/m <sup>2</sup> Light transport 20T Axle load standard allowable road transport 20kN/m <sup>2</sup> VK60 33,3kN/m <sup>2</sup> Heavy transport	Load type 6 Site separation/ Storage miscellaneous Grain 400kg/m <sup>3</sup> ; angle of internal friction 30° Sand/ Gravel 1800kg/m <sup>3</sup> ; angle of internal friction 35° Salt 1200kg/m <sup>3</sup> ; angle of internal friction 40°	
L050HAK	ED 0cm	ED 0cm	
L075HAK	ED 0cm	ED 0cm	
L100HAK	ED 25cm	ED 35cm	
L125HAK	ED 50cm	ED 65cm	
L150HAK	ED 50cm	ED 70cm	
L175HAK	ED 45cm	ED 75cm	
L200HAK	ED 35cm	ED 70cm	
L225HAK	ED 35cm	ED 60cm	
L250HAK	ED 30cm	ED 80cm	
L300HAK	ED 25cm	ED 60cm	
L350HAK	ED 50cm	ED 85cm	
L400HAK	ED 45cm	ED 120cm	
L500HAK	ED 95cm	ED 150cm	

Is your application not mentioned here or will there be fencing on the retaining wall? Then contact our sales department, your application is possible! Applications shown are based on Eurocode with Dutch appendix, these may vary by country. This could potentially affect your desired solution.