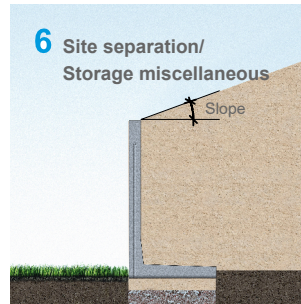
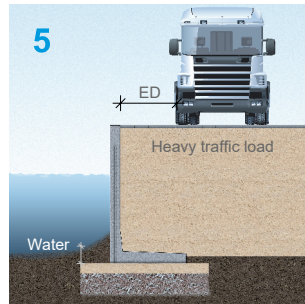
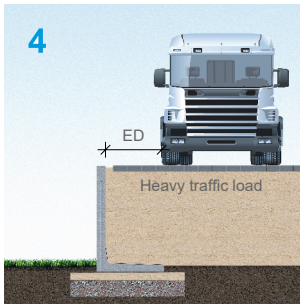
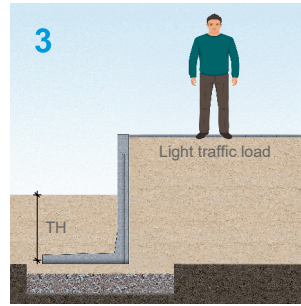
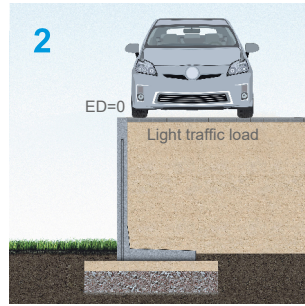
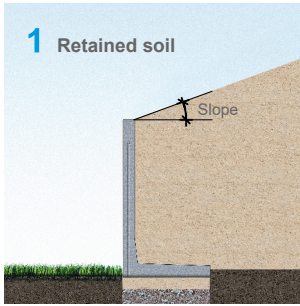


Application possibilities LRS - Civil Engineering



Soil parameters at 1, 2, 3:	1800kg/m ³ ; Angle of internal friction 32,5°
Soil parameters at 4, 5:	1800kg/m ³ ; Angle of internal friction 35°
Subsoil parameters:	1900kg/m ³ ; Angle of internal friction 35°
ED:	Edge distance
TH:	Top-up height
No concrete or stabilisation sand required	

	Load type 1 Retained soil with slope	Load type 2 Light traffic load (5kN/m ²)	Load type 3 Inverted application Min. Top-up (2kN/m ²)
Wall type	Max. Slope(°)	ED	TH
LR050S	31°	0cm	14cm
LR075S	31°	0cm	20cm
LR100S	22°	0cm	25cm
LR125S	22°	0cm	35cm
LR150S	19°	0cm	40cm
LR175S	19°	0cm	50cm
LR200S	15°	0cm	55cm
LR225S	15°	0cm	65cm
LR250S	15°	0cm	70cm
LR300S	19°	0cm	85cm

	Load type 4-5 Heavy traffic load possibly as a weir			Load type 6 Site separation/ Storage miscellaneous		
	VK30 16,7kN/m ² <i>Light transport</i>	12T Axle load 20kN/m ² <i>standard allowable road transport</i>	VK60 33,3kN/m ² <i>Heavy transport</i>	Grain 400kg/m ³ ; angle of internal friction 30°	Sand/ Gravel 1800kg/m ³ ; angle of internal friction 35°	Salt 1200kg/m ³ ; angle of internal friction 40°
Wall type	ED	ED	ED	Slope(°)	Slope(°)	Slope(°)
LR050S	0cm	0cm	0cm			
LR075S	0cm	0cm	10cm			
LR100S	15cm	25cm	55cm			
LR125S	35cm	55cm	85cm			
LR150S	60cm	80cm	115cm			
LR175S	60cm	85cm	130cm			
LR200S	80cm	105cm	160cm			
LR225S	70cm	105cm	170cm			
LR250S	110cm	130cm	180cm			
LR300S	50cm	80cm	195cm			

Minimum flat full, ensilage angle/slope angle and other materials on request.

If your application not mentioned here or will there be fencing on the retaining wall? Then contact our sales department, your application is possible!
Applications shown are based on Eurocode with Dutch appendix, these may vary by country. This could potentially affect your desired solution.